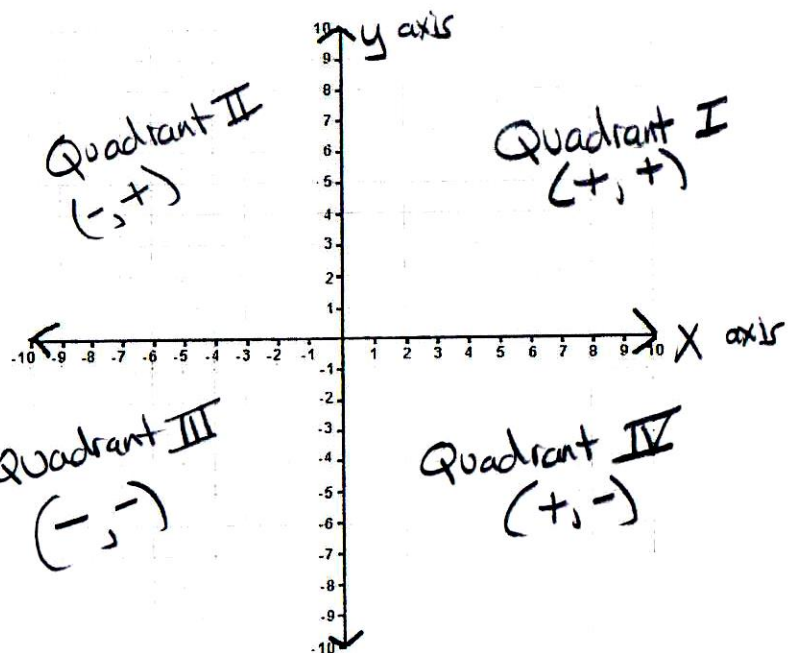
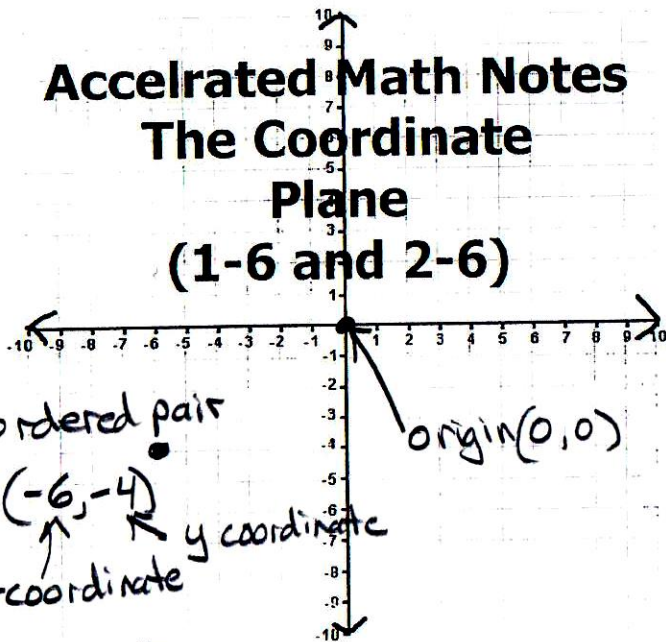


Accelerated Math Notes

The Coordinate Plane

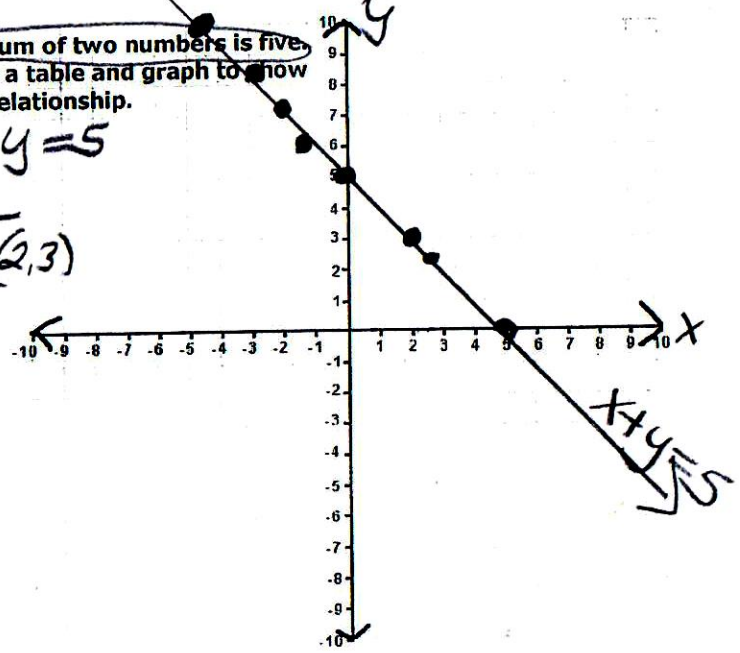
(1-6 and 2-6)



The sum of two numbers is five.
 Make a table and graph to show this relationship.

$x + y = 5$

x	y
2	3 (2,3)
-1	6
-5	0
$2\frac{1}{2}$	$2\frac{1}{2}$



The product of two numbers is four.
 Make a table of values and sketch a graph to show this relationship.

$xy = 4$

x	y
4	1
-4	-1
-1	-4
1	4
2	2
-2	-2
8	$\frac{1}{2}$
$-\frac{1}{2}$	-8

