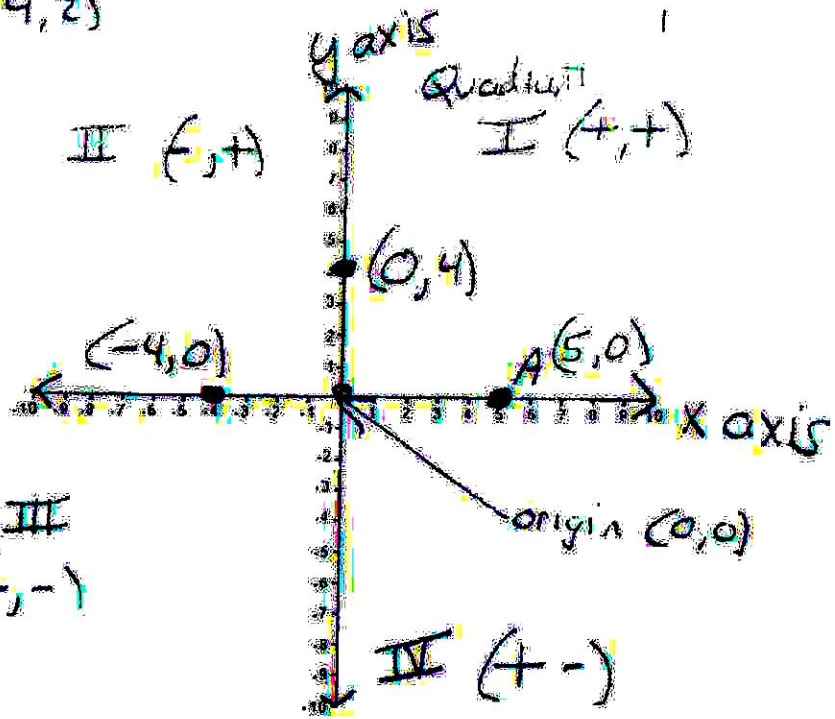
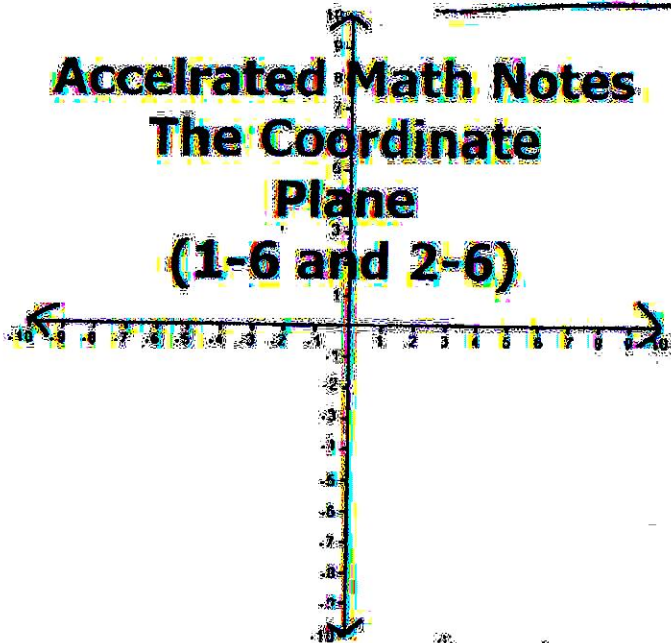


Teacher Notes

$(-4, 2)$

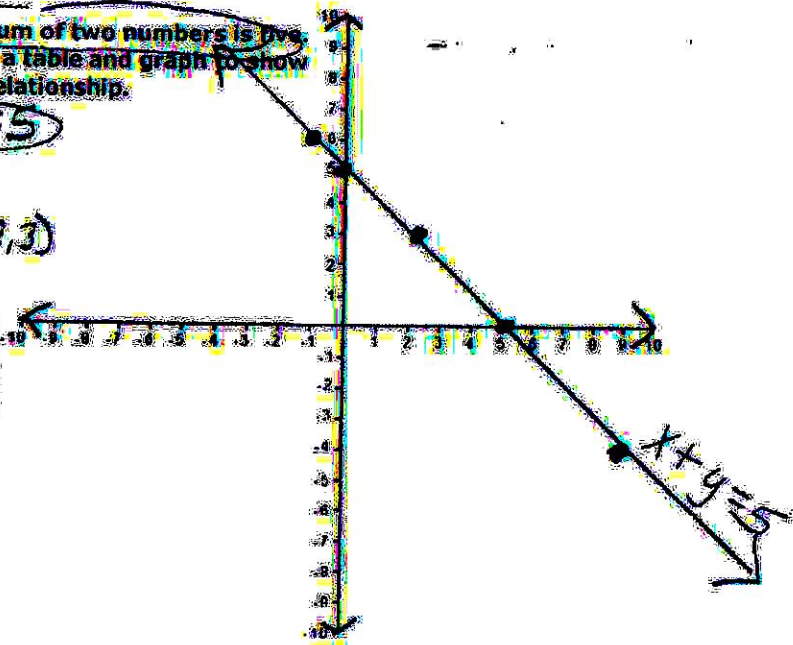
Accelerated Math Notes
The Coordinate Plane
(1-6 and 2-6)



The sum of two numbers is five. Make a table and graph to show this relationship.

$x + y = 5$

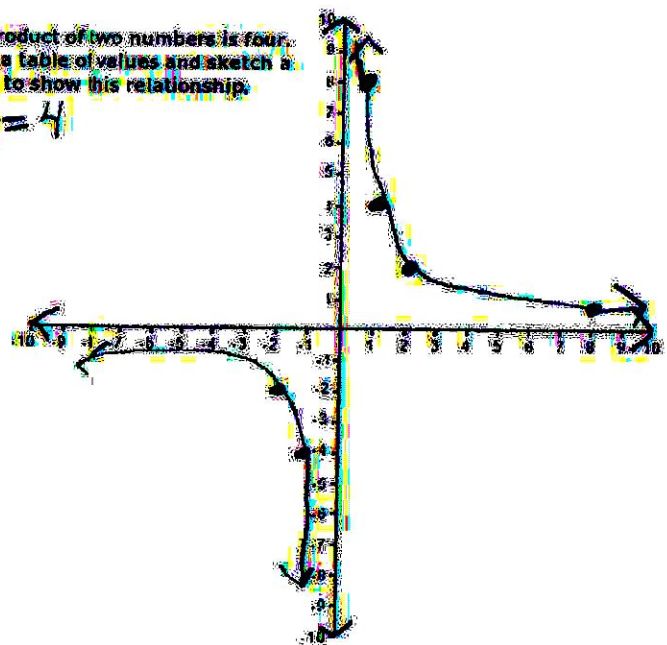
x	y
2	3 (2,3)
-1	6
0	5
-4	0



The product of two numbers is four. Make a table of values and sketch a graph to show this relationship.

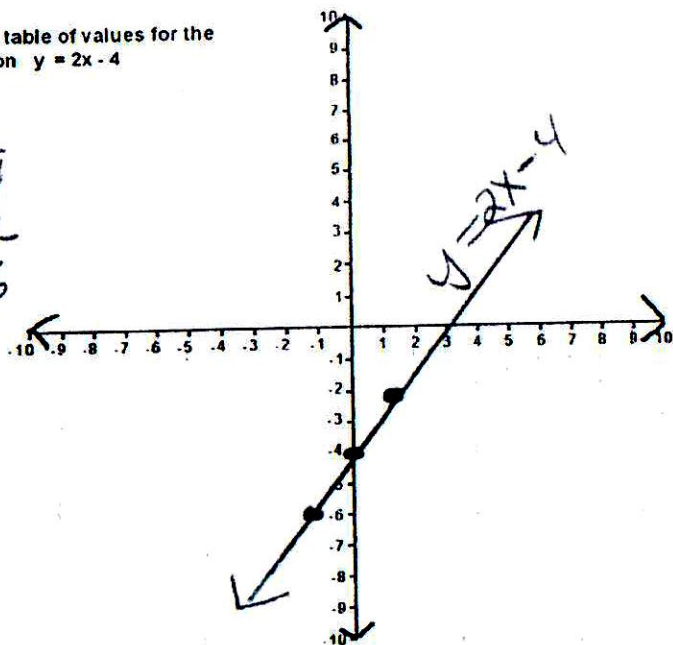
$xy = 4$

x	y
1	4
2	2
-1	-4
-2	-2
8	1/2
1/2	8



Make a table of values for the equation $y = 2x - 4$

x	y
0	-4
1	-2
-1	-6



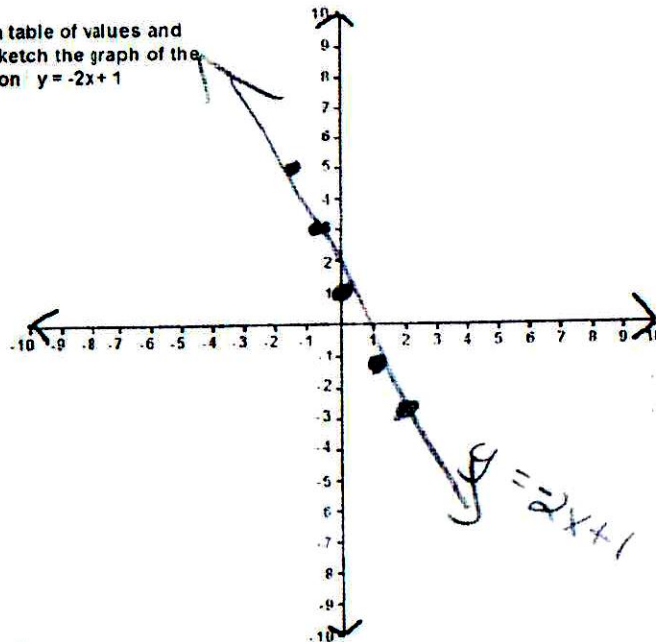
x	y
0	-4
1	-2
-1	-6

$$y = 2 \cdot 0 - 4 = 0 - 4 = -4$$

$$y = 2 \cdot 1 - 4 = 2 - 4 = -2$$

$$y = 2(-1) - 4 = -2 - 4 = -6$$

Make a table of values and then sketch the graph of the equation $y = -2x + 1$



x	y
0	1
1	-1
2	-3
-1	3
-2	5

$$y = -2x + 1$$

$$y = -2 \cdot 0 + 1$$

$$y = -2 \cdot 1 + 1 = -2 + 1$$

$$y = -2 \cdot 2 + 1 = -4 + 1$$

$$y = -2(-1) + 1 = 2 + 1$$

$$y = -2(-2) + 1 = 4 + 1$$